

# 3" to 4" Pump Clamp (CLM01)

INSTALLATION & OPERATIONS MANUAL



**AIRWELL GROUP PTY LTD**  
**DESIGNED AND MANUFACTURED IN AUSTRALIA**

A.B.N. 46 009 323 871

The contents and specifications herein are subject to change without notice.

All rights reserved.

Airwell Group Pty Ltd

30 Harris Road, Malaga, Western Australia 6090

Telephone: (61) 08 9209 3355 - Facsimile: (61) 08 9209 2666

Email: [sales@airwellgroup.com.au](mailto:sales@airwellgroup.com.au)

<http://www.airwellgroup.com.au>

1	INTRODUCTION .....	3
2	OPENING THE PACKAGE .....	3
3	MAIN PARTS IDENTIFICATION .....	4
4	SAFETY PRECAUTIONS.....	5
5	INSTALLATION .....	5
6	OPERATION .....	6
7	REGULAR CHECKS AND MAINTENANCE.....	8
8	TORQUE SETTINGS.....	8
9	WARRANTY DETAILS .....	9
10	WARRANTY REGISTRATION CARD .....	10

## 1 INTRODUCTION

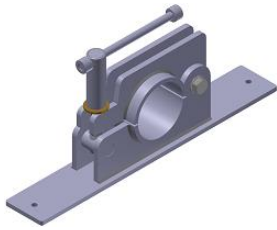
The purpose of the CLM01 pump clamp is to provide adequate clamping of Airwell pumps during servicing, in order to undo the bottom screen.

The pump clamp has rubber inserts suitable for 3", 3½", 4" Airwell pumps.

This manual covers the installation, operation and maintenance of the CLM01 pump clamp.

## 2 OPENING THE PACKAGE

In the package you should have received the following items:



Pump clamp assembly



Rubber insert for 3"  
Airwell pumps  
(CLM01-08)

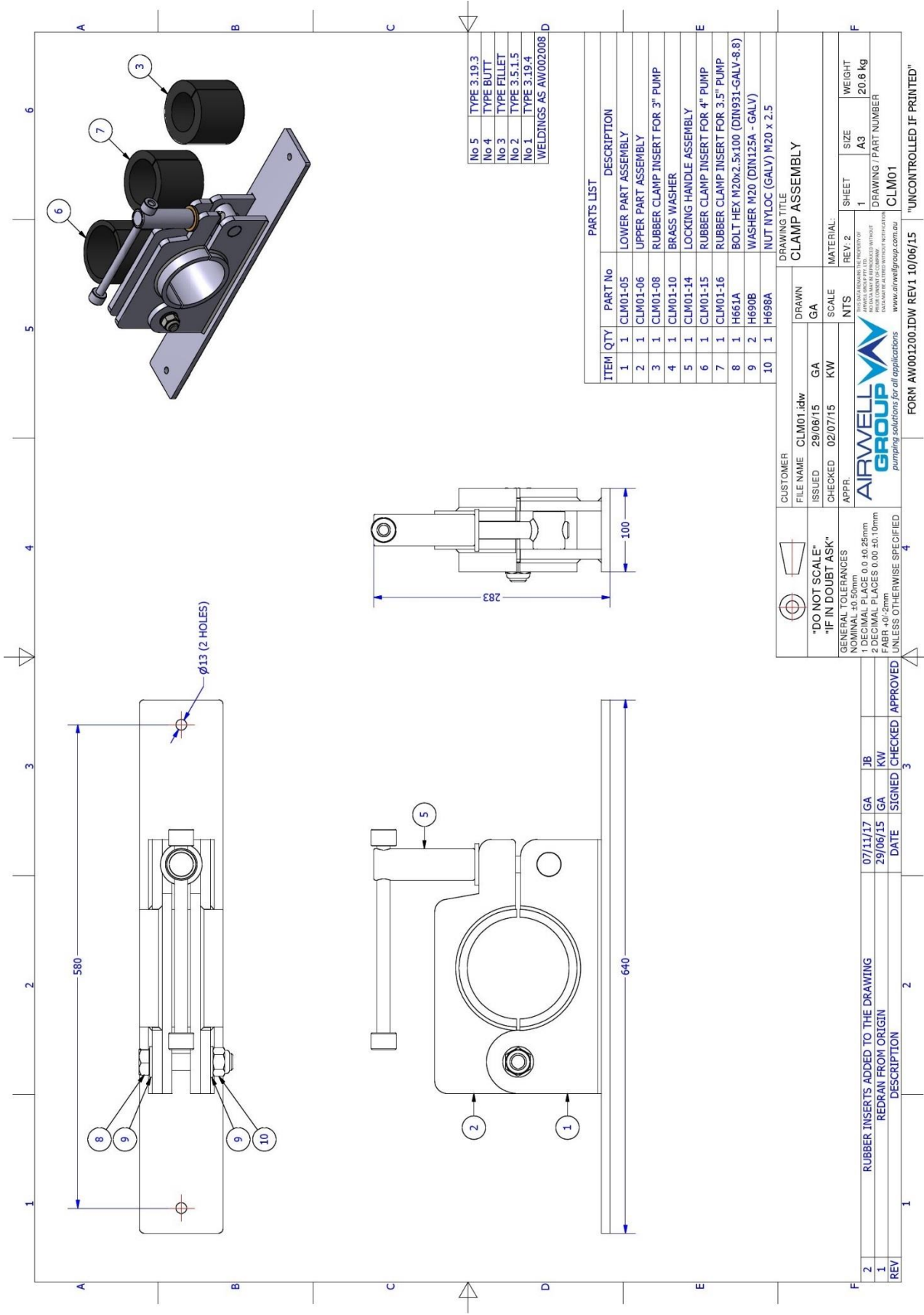


Rubber insert for 3½"  
Airwell pumps  
(CLM01-16)



Rubber insert for 4"  
Airwell pumps  
(CLM01-15)

### 3 MAIN PARTS IDENTIFICATION



CUSTOMER		DRAWN		SCALE		SHEET		WEIGHT	
FILE NAME	CLM01.idw	GA	GA	NTS	1	A3	1	20.8 kg	
ISSUED	29/06/15	GA	KW	SCALE					
CHECKED	02/07/15	KW		MATERIAL:					
APPR.				REV: 2					
<b>AIRWELL GROUP</b> pumping solutions for all applications www.airwellgroup.com.au									
FORM AW001200.IDW REV1 10/06/15 "UNCONTROLLED IF PRINTED"									

## 4 SAFETY PRECAUTIONS



### **Eye protection must be worn.**

Severe injuries or even blindness can be caused if a part breaks down during disassembling procedure.



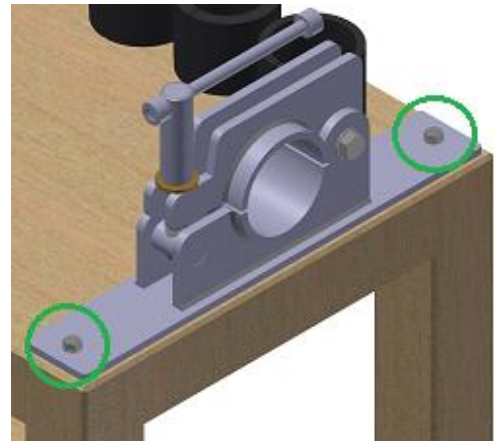
### **Protective gloves must be worn.**

Protective gloves may protect you from scratching or crushing your fingers during assembly or bolt fastening.

## 5 INSTALLATION

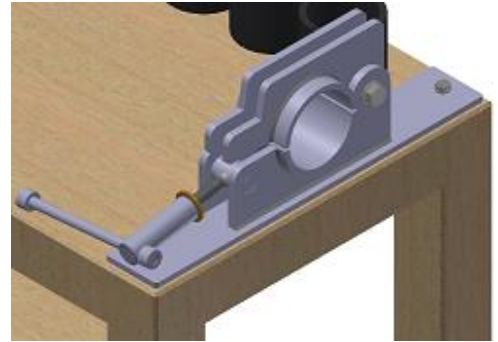
Mount the clamp at the side of a rigid bench.

Bolt it down at the two existing holes with 12mm bolts (not provided).

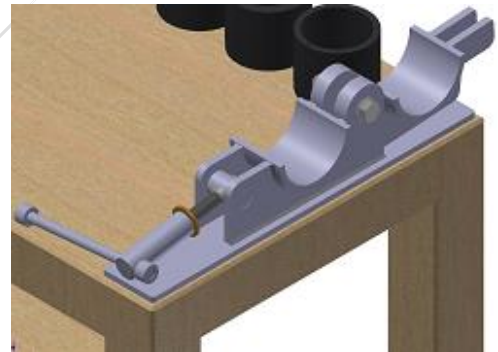


## 6 OPERATION

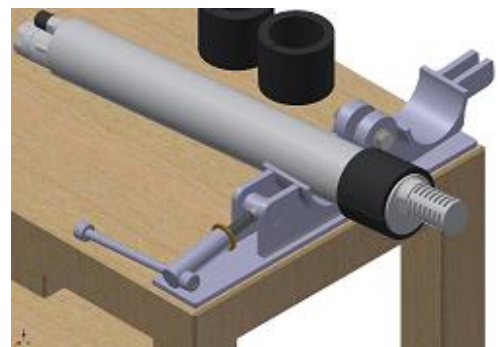
Loosen the locking handle a couple of turns and let it lie down on the bench.



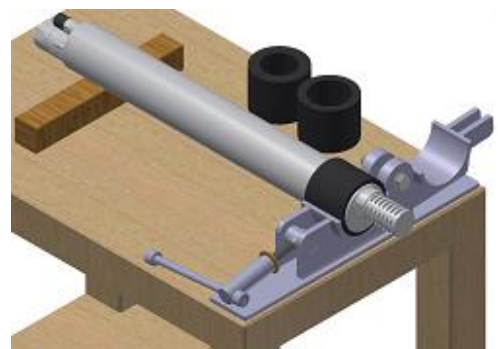
Open wide the upper clamp assembly



Prepare your pump for clamping, by adding the correct rubber sleeve i.e. 3", 3+1/2" or 4" diameter

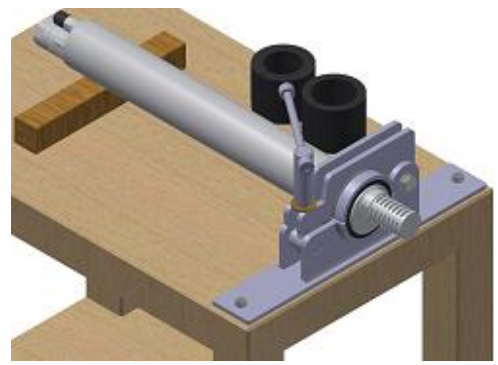


Lay the pump as shown. It is recommended to use a packer at the other end of the pump to keep it levelled.

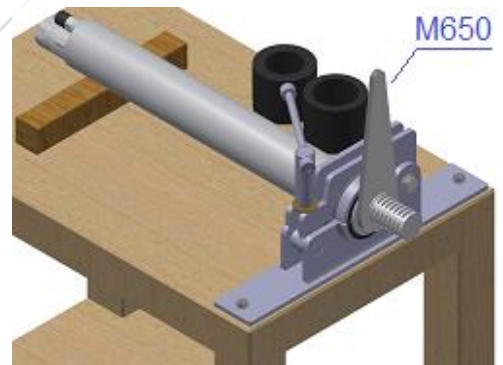


Close the clamp by following the reverse order as described above.  
Tighten the locking handle by using hand pressure only.

**Note:** Do not use any kind of lever for tightening. Risk of damaging the clamp!



Use the M650 Airwell key (not provided) to release the pump screen.

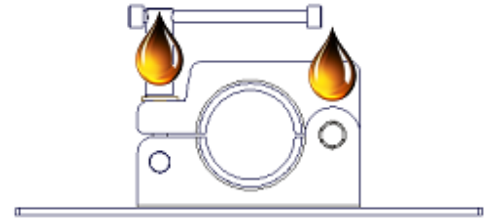




## 7 REGULAR CHECKS AND MAINTENANCE

Each time before use:

- Check for any loose components.
- Remember to add a drop of oil on the screw and the hinge as indicated.



## 8 TORQUE SETTINGS

	Strength grade				
	4.6	6.8	8.8	10.9	12.9
Metric thread	Torque setting (Nm)				
M 3 x 0.5	0.51	1.01	1.35	1.90	2.27
M 4 x 0.7	0.95	1.91	2.54	3.57	4.29
M 5 x 0.8	2.28	4.56	6.09	8.56	10.3
M 6 x 1	3.92	7.85	10.5	14.7	17.7
M 8 x 1.25	9.48	18.9	25.3	35.5	42.7
M10 x 1.5	19.1	38.1	50.9	71.5	86.8
M12 x 1.75	32.6	65.1	86.9	122	146
M14 x 2	51.9	104	139	195	234
M16 x 2	79.9	160	213	299	359
M18 x 2.5	110	220	293	413	495
M20 x 2.5	156	312	416	585	702
M22 x 2.5	211	422	563	792	950
M24 x 3	270	539	719	1010	1213
M27 x 3	398	795	1060	1490	1789
M30 x 3.5	540	1080	1440	2025	2430

Material	C/S		S/S 304		S/S 316		Brass	
	BSP	NPT	BSP	NPT	BSP	NPT	BSP	NPT
Pipe thread	Torque setting (Nm)							
1/8"	16	18	14	16	16	18	11	13
1/4"	34	50	31	45	34	50	24	35
3/8"	54	63	49	57	54	63	38	44
1/2"	73	160	66	144	73	160	51	112
3/4"	106	200	95	180	106	200	74	140
1"	152	340	137	306	152	340	106	238
1+1/4"	209	450	188	405	209	450	146	315
1+1/2"	286	560	257	504	286	560	200	392

- Notes:**
- Always lubricate zinc plated and stainless-steel bolts.
  - To convert Nm to lb-ft, multiply by 0.7375.

# Airwell Group Pty Ltd

## WARRANTY

**Airwell Group Pty Ltd** is committed to providing our customers with hardware whose manufacture, selection of materials and inbuilt quality exceeds our customers product expectations. The Airwell system is designed to provide long-term, sustainable service in a wide variety of applications.

Airwell Group Pty Ltd warranty terms and conditions are not intended to restrict your rights or guarantees afforded to you under the Australian Consumer Laws.

Provided the system has been installed in accordance with the instructions incorporated in the 'Installation and Operations' manual, and periodically maintained, the following warranty is applicable:

1. Equipment manufactured by Airwell Group Pty Ltd is warranted to be free from manufacturing and material defects for **5 years** from date of purchase from Airwell Group or one of its recognised distributors.
2. Should a problem arise, **any defective parts are to be returned to the point of purchase at the expense of the owner**, for examination.
3. Replacement parts will be issued under warranty, provided the equipment has not been;
  - i. repaired or altered by anyone other than an Airwell technician, or;
  - ii. the equipment was improperly installed, abused, misused, neglected or accidentally damaged.
4. All repaired or replaced items covered under warranty will be returned to the owner at the owner's expense.
5. Return of the faulty parts for analysis also enables us to continually improve the Airwell product. Please ensure that the returned items are suitably packaged. **Transit damage is not warrantable.**
6. All third-party equipment is supplied in good faith, however, Airwell does not provide warranty on any third-party goods supplied. If required, Airwell will assist our clients with warranty claims on third party goods with the original equipment manufacturer/s. The final decision and responsibility of the warranty claim is reserved by the original equipment manufacturer/s.

### Damage due to corrosion:

Airwell Group uses new first grade 316L stainless steel as a standard minimum specification in the manufacture of down hole pumping equipment. (Wire rope 304).

Every effort is made to maximise corrosion tolerance on all down hole equipment, however due to the unpredictable corrosive nature of ground water, Airwell Group Pty Ltd will not provide a warranty on corrosion.

The exception where a warranty would apply would be if the corrosion is caused by a piece of substandard or incorrect grade material being included in a pump unit. (If more than one section of material in a pump has corroded it is assumable that it is a general corrosion problem and not a particular piece of material).

It is the responsibility of the customer to advise Airwell Group staff if the pump is to be installed in areas whereby the system may be subjected to damage caused by chemicals, or the area is deemed 'Hazardous', whereby the environment is potentially explosive.

Airwell Group Pty Ltd shall not be liable for incidental or consequential damages, including any damage to equipment or the environment caused by the failure of the Airwell system.

Please return the warranty registration card either by fax or post to your point of purchase at your earliest convenience. Alternatively, you can email the warranty registration card to [sales@airwellgroup.com.au](mailto:sales@airwellgroup.com.au)

## 10 WARRANTY REGISTRATION CARD



### WARRANTY REGISTRATION CARD

PLEASE POST OR FAX TO:  
AIRWELL GROUP PTY. LTD.  
30 Harris Road,  
Malaga  
Western Australia 6090

Please note: Warranty is conditional upon correct installation and operation of the product as per the Installation and Operations Manual provided with the unit and the warranty disclosure contained within the Installation and Operations Manual.

Pump serial number: - .....

Controller serial number: - .....

Company name: - .....

Address: - .....

Phone number: - (.....)..... Fax number: - (.....).....

Contact name: - .....

Equipment purchased from: - .....

Commissioned by: - ..... Date: - ...../...../.....

### ARE YOU HAPPY WITH THE PRODUCT?

We appreciate your comments regarding our products and service and welcome any suggestions that may help to improve them.

Was there any transport damage?  Yes  No

Were you happy with the quality and presentation of the equipment?  Yes  No

Were you happy with the sales and service personnel?  Yes  No

Comments:

